

The Female Figure in Shadow and Light: Exploring the Art of Models Series

Throughout the annals of art history, the female figure has captivated artists and audiences alike, serving as an enduring source of inspiration and aesthetic intrigue. The interplay of shadow and light, known as chiaroscuro, has been a particularly potent tool in shaping the portrayal of the female form, lending it depth, drama, and expressive power.



Art Models 6: The Female Figure in Shadow and Light (Art Models series) by Chip Kidd

★★★★☆ 4.2 out of 5

Language : English
File size : 54780 KB
Text-to-Speech : Enabled
Screen Reader : Supported
Enhanced typesetting : Enabled
Print length : 401 pages
Lending : Enabled



In the Masters Series, a collection of renowned artworks spanning centuries, the female figure takes center stage, illuminated by the interplay of light and shadow. This article delves into this captivating series, examining how artists have employed chiaroscuro to explore the complexities of the female form, express their artistic vision, and convey a wide range of emotions and narratives.

Chiaroscuro and the Female Form

Chiaroscuro is a technique that utilizes contrasting light and shadow to create a sense of depth, volume, and drama in a work of art. In the context of the female figure, this technique can accentuate the curves of the body, highlight delicate features, and convey a range of emotions and expressions.

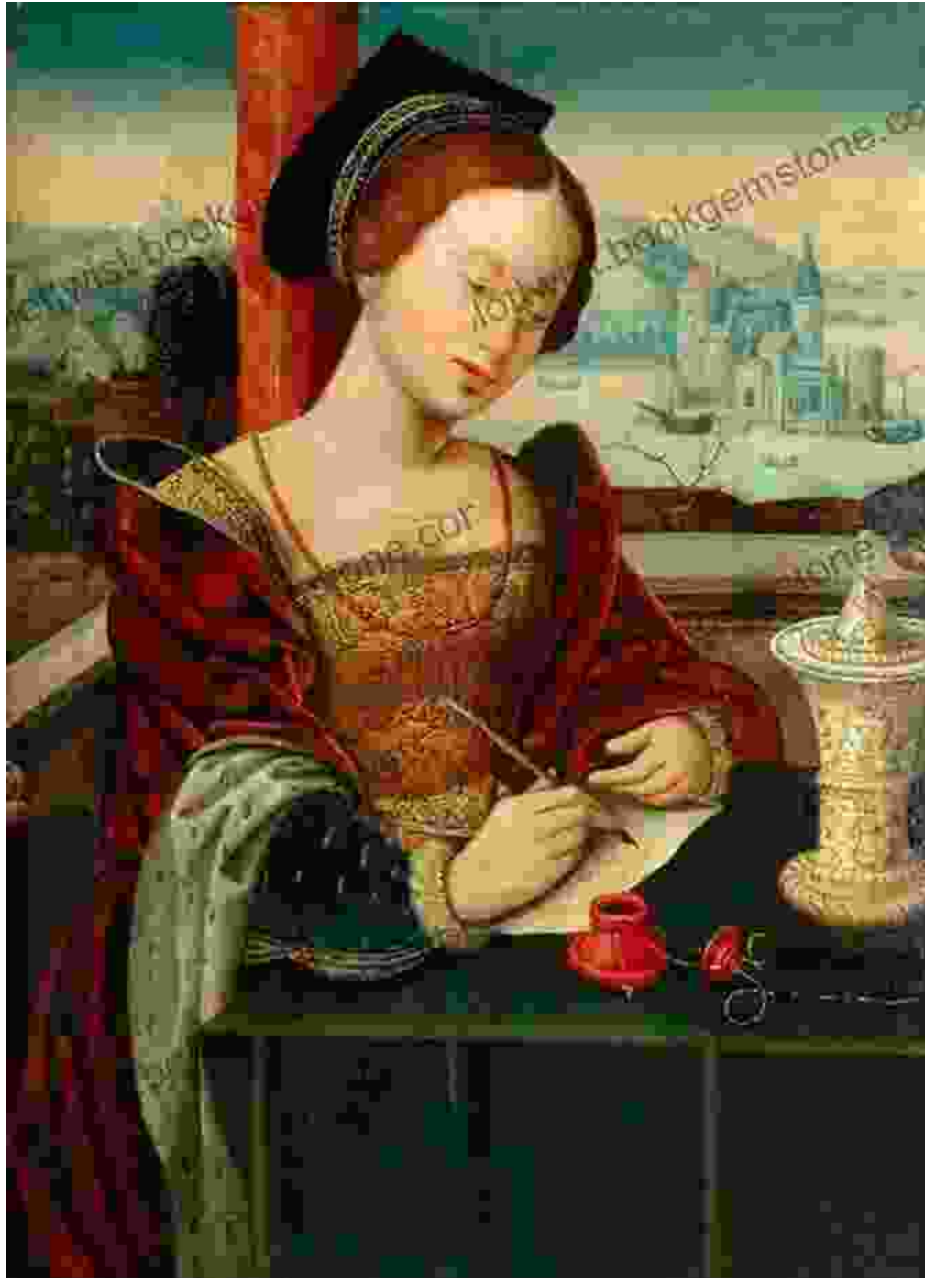
By strategically positioning light and shadow, artists can draw attention to specific areas of the female form, creating a focal point and guiding the viewer's eye. Shadows can conceal or reveal, adding an element of mystery and intrigue to the composition. They can also be used to emphasize the texture and contours of the skin, capturing the subtle nuances of the human body.

The Masters Series: Exploring the Female Form

The Masters Series showcases a diverse collection of artworks that exemplify the use of chiaroscuro in depicting the female figure. From the Renaissance masters to Baroque painters and beyond, these works offer a glimpse into the evolution of this technique and its enduring influence on the art world.

Renaissance: The Birth of Chiaroscuro

During the Renaissance, artists such as Leonardo da Vinci, Michelangelo, and Raphael pioneered the use of chiaroscuro, establishing it as a defining characteristic of the period. Their works often featured women with idealized bodies and serene expressions, bathed in soft, diffused light that highlighted their delicate features and graceful poses.



Leonardo da Vinci's "Mona Lisa" is a prime example of this Renaissance aesthetic. Her enigmatic smile, captured in a subtle play of light and shadow, has captivated audiences for centuries. The interplay of darkness and illumination adds depth to her features and invites viewers to ponder her inner thoughts and emotions.

Baroque: The Height of Chiaroscuro

In the Baroque period, artists pushed the boundaries of chiaroscuro, using dramatic lighting and contrasting shadows to create a heightened sense of emotion and movement. Caravaggio and Artemisia Gentileschi were among the most influential Baroque masters who explored the female figure in this dynamic style.



Artemisia Gentileschi's "Judith Beheading Holofernes" is a powerful depiction of a biblical heroine, illuminated by a single source of light that casts her face in sharp relief against the dark background. Judith's strong, determined expression and the dramatic chiaroscuro technique convey the intensity of the moment and the struggle between good and evil.

Neoclassicism: A Return to Restraint

In the 18th century, Neoclassicism emerged as a reaction to the excesses of the Baroque period. Artists sought to revive the idealized forms and balanced compositions of classical art, while still retaining some elements of chiaroscuro. Jacques-Louis David and Anne-Louis Girodet were notable Neoclassical painters who portrayed women with a more serene and composed elegance.



Jacques-Louis David's "Madame Récamier" is an iconic work from this period, depicting a fashionable young woman reclining on a chaise longue. The soft, diffused light illuminates her delicate features and graceful pose, creating a sense of harmony and tranquility.

Contemporary Interpretations

In the 20th and 21st centuries, the female figure continues to be explored by artists in new and innovative ways. Contemporary artists have reinterpreted the traditional techniques of chiaroscuro, using light and shadow to express a wide range of emotions and address social issues.



Cindy Sherman's "Untitled Film Stills" series features women in various poses and costumes, often referencing classic films and art history.

Sherman uses chiaroscuro to create a sense of ambiguity and mystery, encouraging viewers to question the roles and representations of women in society.

The Masters Series offers a comprehensive exploration of the female figure in shadow and light, showcasing the diverse approaches taken by artists throughout history. Through chiaroscuro, they have captured the beauty, sensuality, and emotional depth of women, creating iconic works that continue to inspire and captivate audiences to this day.

From the ethereal elegance of Renaissance Madonnas to the dramatic intensity of Baroque heroines and the introspective nature of contemporary interpretations, the female figure remains a potent symbol in the world of art. The interplay of shadow and light has played an integral role in shaping the portrayal of these figures, adding depth, drama, and a timeless allure that transcends the boundaries of time.



Art Models 6: The Female Figure in Shadow and Light

(Art Models series) by Chip Kidd

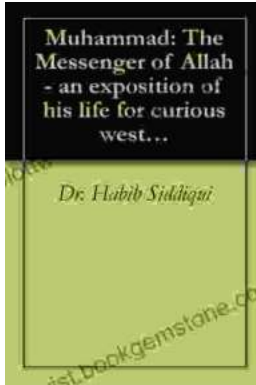
★★★★☆ 4.2 out of 5

Language : English
File size : 54780 KB
Text-to-Speech : Enabled
Screen Reader : Supported
Enhanced typesetting : Enabled
Print length : 401 pages
Lending : Enabled

FREE

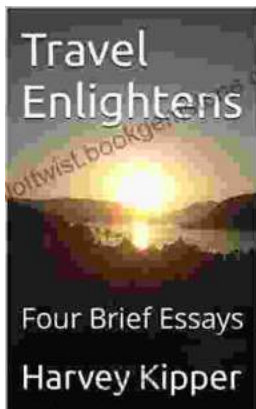
DOWNLOAD E-BOOK





The Messenger of Allah: An Exposition of His Life for Curious Western Readers

The Prophet Muhammad, born in the 6th century in Mecca, Saudi Arabia, is the founder of Islam and the central figure of the religion....



Travel Enlightens: Four Brief Essays

Essay 1: Travel as a Window to the World Travel has been a transformative experience throughout human history. It broadens our perspectives, exposes us to...