

Opening Moves: The Gam3



Opening Moves (The Gam3 Book 1) by Cosimo Yap

★★★★☆ 4.5 out of 5

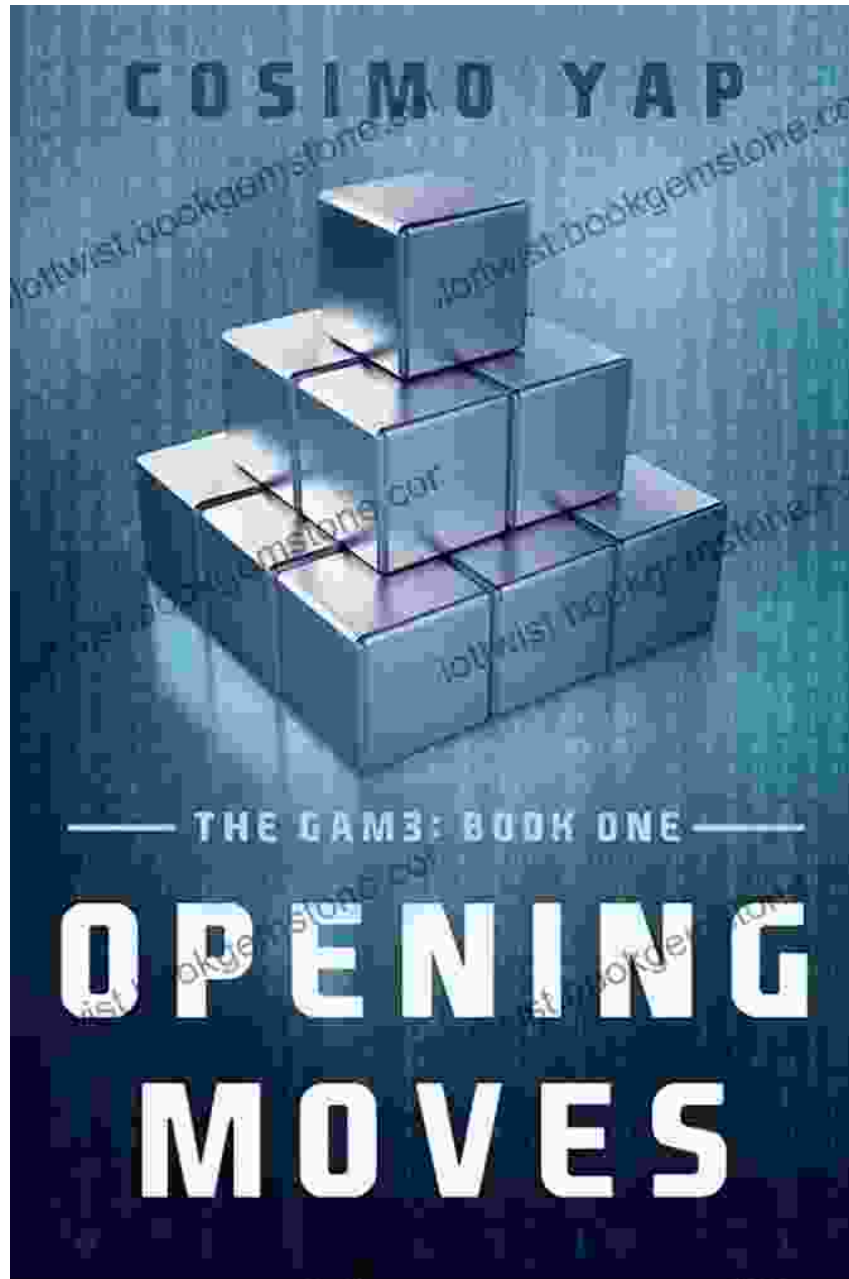
Language	: English
File size	: 2843 KB
Text-to-Speech	: Enabled
Screen Reader	: Supported
Enhanced typesetting	: Enabled
Word Wise	: Enabled
Print length	: 355 pages
Lending	: Enabled



The Gam3 is a complex and challenging game that requires strategic thinking and careful planning. It can be difficult to know where to start, but with the right opening moves, you can set yourself up for success.

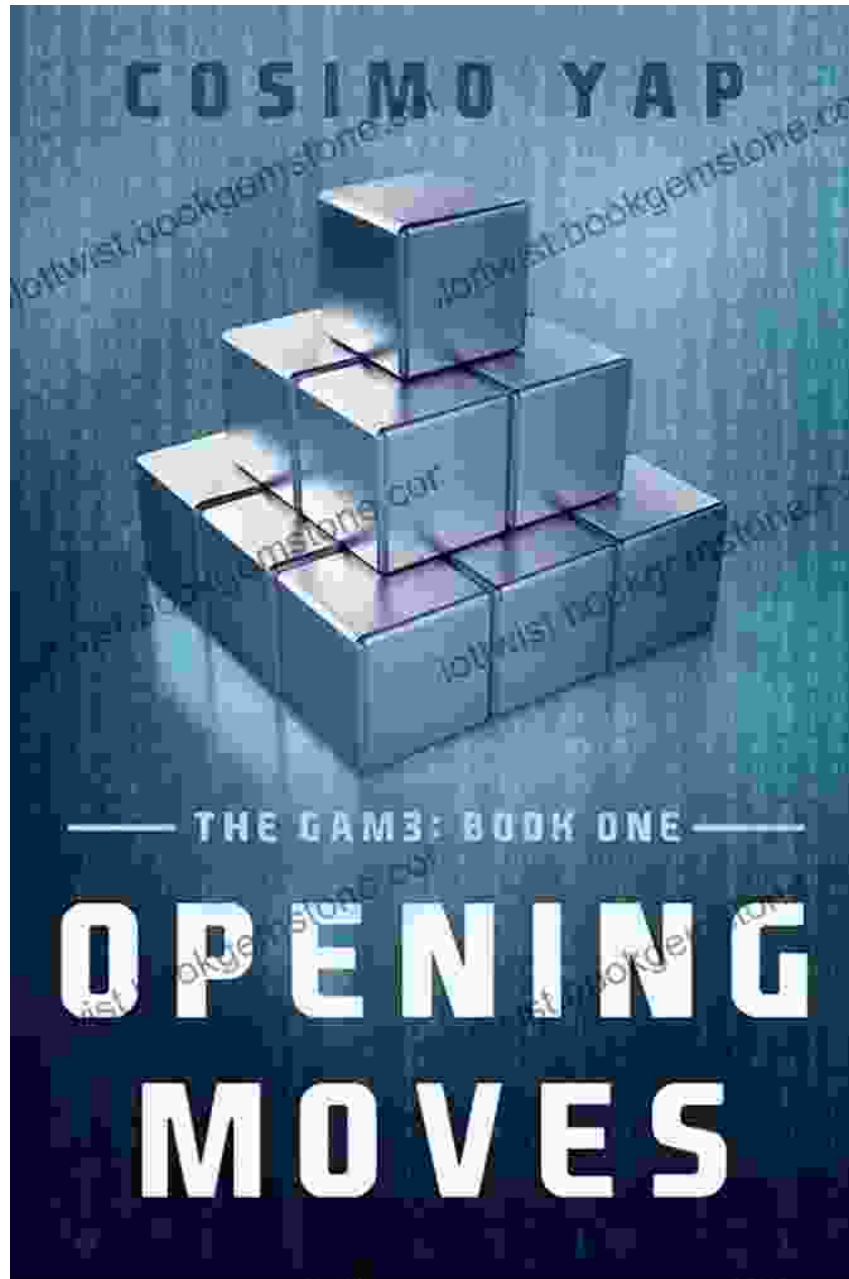
1. Control the center

The center of the board is the most important area to control. By controlling the center, you can limit your opponent's movement and force them to make mistakes. There are a few different ways to control the center, but the most common is to develop your pieces to the center squares.



2. Develop your pieces

Once you have control of the center, you need to develop your pieces. This means moving them to squares where they can attack your opponent's pieces or control important squares. The most important pieces to develop early on are your knights and bishops.



3. Castle your king

Castling is a special move that allows you to move your king to safety and bring your rook into play. Castling is usually done early in the game, when your king is still in danger. There are two different ways to castle: kingside castling and queenside castling.

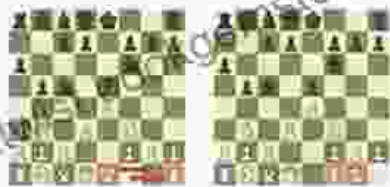
6 Castling

Learn More: [Chess.com/learn/castling](#)

Castling is a special defensive move to protect your king. You slide behind your king into the same square. Sliding is the only move where you may move two pieces in the same move. Castling is also the only time in chess when it is legal to move the king more than one square. Castling can be performed with either the king-side or queen-side rook.

KINGSIDE CASTLE

The white king moves two squares from e1 to g1, and the white rook moves from h1 to f1. On Chess.com, you can perform castling by dragging your king from the e1 square to the g1 square and the rook swings over to f1 automatically.



QUEENSIDE CASTLE

The white king moves two squares from e1 to c1, and the white rook moves from d1 to f1. On Chess.com, you simply drag the king to the c1 square to perform queenside castling and the rook automatically moves to f1.



THE RULES OF CASTLING

1. You may only castle if you haven't moved your king and your rook.

2. No piece can be between your king and rook on the side where you want to castle.



3. You can't castle if you're in check. You might find out just in check before you can do anything.



4. You cannot castle if any square the king is moving through is attacked by your opponent's pieces. **Note:** rooks on their own can move through an attacked square or where they're attacked.



5. You cannot castle into check. This makes sense since moving into check is illegal in the first place.

4. Attack your opponent's pieces

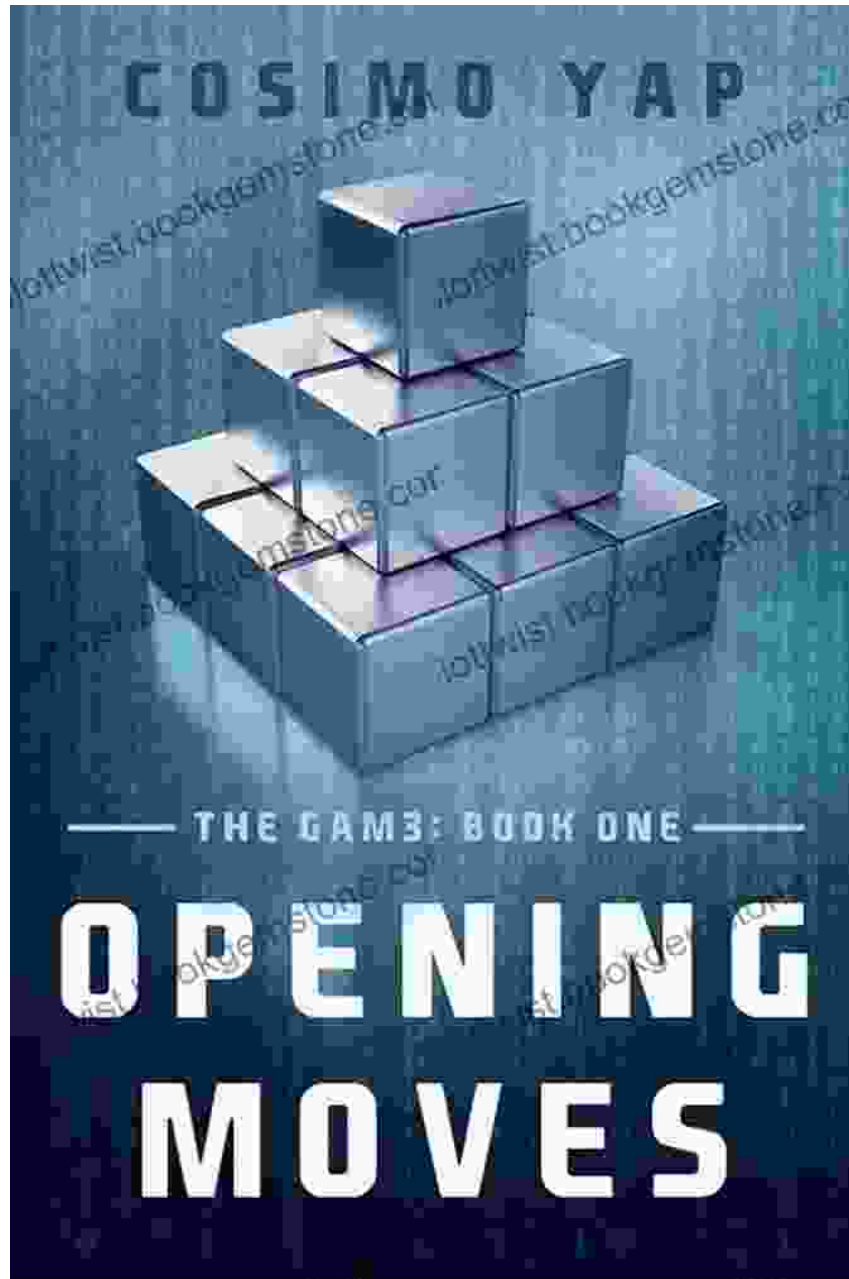
Once you have developed your pieces, you can start attacking your opponent's pieces. This can be done by moving your pieces to squares where they can attack your opponent's pieces or by capturing your opponent's pieces. When attacking your opponent's pieces, be careful not to overextend your pieces, as this can leave them vulnerable to attack.

HOW TO **ATTACK** YOUR OPPONENT'S KING?

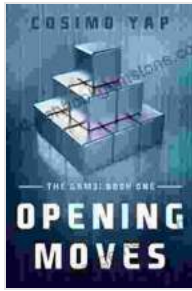


5. Protect your king

Your king is the most important piece on the board, so it is important to protect it at all times. This can be done by keeping your king in the center of the board, surrounded by your other pieces. You should also avoid moving your king out into the open, where it can be attacked by your opponent's pieces.



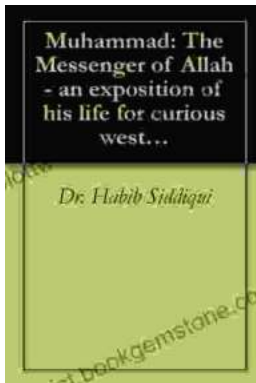
The Gam3 is a complex and challenging game, but by following these opening moves, you can set yourself up for success. With practice, you will learn how to control the center, develop your pieces, castle your king, attack your opponent's pieces, and protect your king. These are the essential elements of The Gam3, and by mastering them, you will be well on your way to becoming a successful player.



Opening Moves (The Gam3 Book 1) by Cosimo Yap

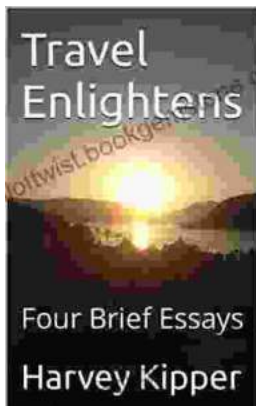
★★★★☆ 4.5 out of 5

Language : English
File size : 2843 KB
Text-to-Speech : Enabled
Screen Reader : Supported
Enhanced typesetting : Enabled
Word Wise : Enabled
Print length : 355 pages
Lending : Enabled



The Messenger of Allah: An Exposition of His Life for Curious Western Readers

The Prophet Muhammad, born in the 6th century in Mecca, Saudi Arabia, is the founder of Islam and the central figure of the religion....



Travel Enlightens: Four Brief Essays

Essay 1: Travel as a Window to the World Travel has been a transformative experience throughout human history. It broadens our perspectives, exposes us to...

